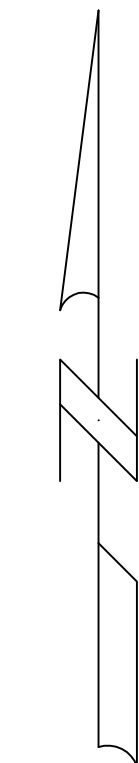


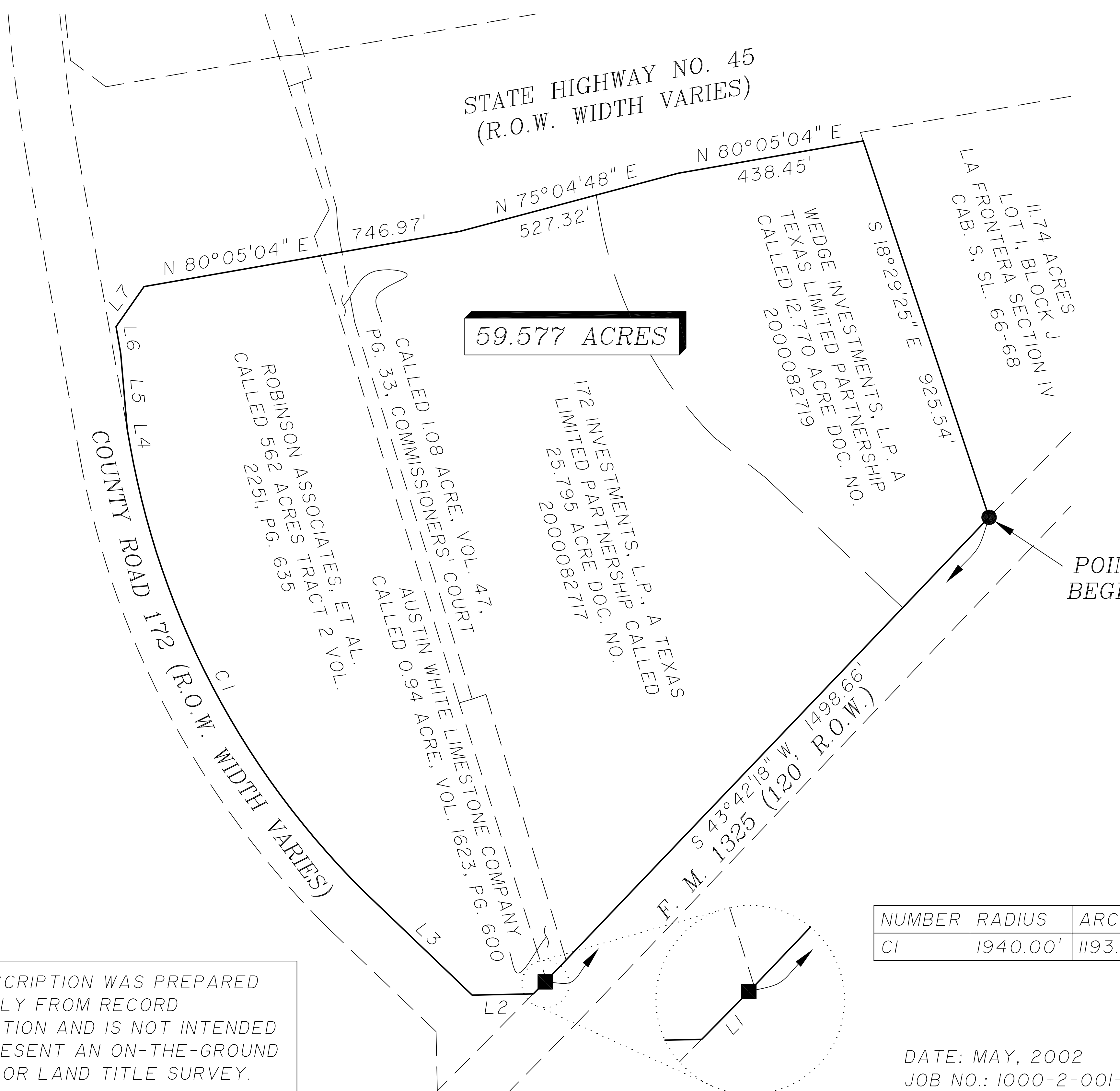
# SKETCH TO ACCOMPANY DESCRIPTION



SCALE: 1" = 400'

WILLIAMSON COUNTY, TEXAS

- 1/2" IRON ROD FOUND
- TYPE II TXDOT MONUMENT FOUND



POINT OF BEGINNING

NUMBER	DIRECTION	DISTANCE
L1	S 44°40'14" W	39.18'
L2	S 88°46'54" W	142.72'
L3	N 46°13'06" W	348.10'
L4	N 10°05'27" W	39.12'
L5	N 04°54'56" W	177.75'
L6	N 09°54'56" W	63.33'
L7	N 35°05'04" E	113.84'

NUMBER	RADIUS	ARC	DELTA	CH. BRG.	CHORD
CI	1940.00'	1193.56'	35°15'02"	N 27°42'15" W	1174.82'

THIS DESCRIPTION WAS PREPARED PARTIALLY FROM RECORD INFORMATION AND IS NOT INTENDED TO REPRESENT AN ON-THE-GROUND SURVEY OR LAND TITLE SURVEY.

DATE: MAY, 2002  
 JOB NO.: 1000-2-001-18  
 BY: M. NOLEN

**Baker-Aicklen & Associates, Inc.**  
 Engineers/Surveyors